

**Vocabulary**

**Mean** - a math process where you find the sum of the data and divide by the number of pieces of data. It is the balance point for the data set.

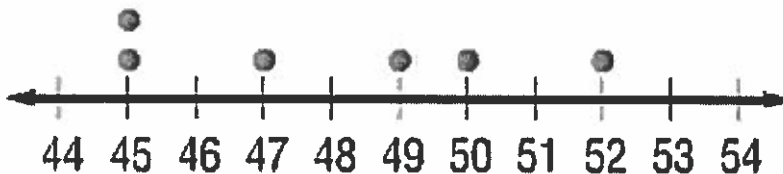
**Average** - It is another name for mean and summarizes the data using a single number.

**Key Concept**

It is best or most appropriate to use mean when the data has no extreme values.

**How to Read a Dot Plots**

In a dot plot, individual data values are represented as dots above a number line.

**High Temperatures**

This Dot Plot has the following data 45, 45, 47, 49, 50, and 52.

**Guided Practice:**

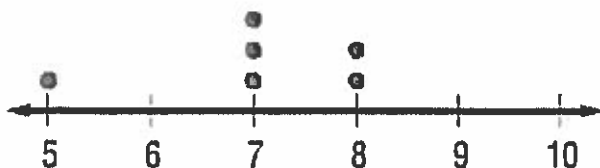
- Tina and her friends downloaded songs for 6 weeks, as shown in the table below. On average, how many songs did they download each week?

Number of Songs Downloaded each week					
12	6	10	9	4	1

$$\#1 \quad 12 + 6 + 10 + 9 + 4 + 1 = 42$$

$$\#2 \quad 42 \div 6 = \boxed{7 \text{ songs}}$$

- The dot plot shows the number of beads sold. Find the mean number of beads.

**Number of Beads**

$$\#1 \quad 5 + 7 + 7 + 7 + 8 + 8 = 42$$

$$\#2 \quad 42 \div 6 = \boxed{7 \text{ beads}}$$

3. The table shows the number of CDs a group of friends bought. Find the mean number of CDs the group bought.

Number of CDs Purchased		
3	4	6
0	2	

#1  $3 + 4 + 6 + 0 + 2 = 15$

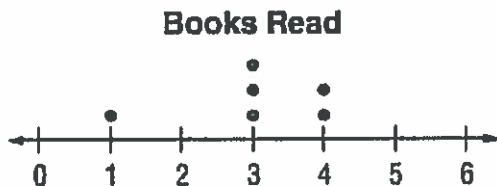
#2  $15 \div 5 =$  3 CDs

4. The table shows the greatest depths of four of the five oceans in the world. If the average greatest depth is 8.094 kilometers, what is the greatest depth of the Southern Ocean?

Ocean	Greatest Depth (km)
Pacific	10.92
Atlantic	9.22
Indian	7.46
Arctic	5.63
Southern	■

#### Partner Talk

The dot plot shows the number of books Deanna read each week of a month-long reading challenge. Find the mean numbers of books she read.



#1  $1 + 3 + 3 + 3 + 4 + 4 =$

#2  $18 \div 6 =$  3 books

Building on the Essential Question - Why is it helpful to find the mean of a data set?

The mean summarizes the data using one number.